

Installation and Startup Guide

For DataPage+ 2012

Table of Contents

Installing Prerequisite Components.....	1
Overview.....	1
Step 1: Run Setup.exe and Start the Wizard	1
Step 2: Accept License Agreements.....	1
Installing the DataPage+ Software	5
Overview.....	5
Step 1: Start the Wizard.....	5
Step 2: Fill in Customer Information.....	6
Step 3: Select Items to Install	7
Step 4: Select the Installation Folder	9
Step 5: Confirm and Finish the Installation	10
Step 6: Check the Installed Contents.....	13
Program Files.....	13
Demo Database Files.....	14
Using DataPage+ for the First Time	15
Overview.....	15
Step 1: Start the Software.....	15
Step 2: Follow the Getting Started Guide.....	15
Troubleshooting the Install	17
Overview.....	17

Installing Prerequisite Components

Overview

This covers the installation of these prerequisite components:

- Microsoft .NET Framework 4
- Microsoft SQL Server 2008 Express

Step 1: Run Setup.exe and Start the Wizard

If you're installing from a CD/DVD, double-click on the main **setup.exe** (Figure 1).

If you're installing from a downloadable file, extract the contents from the downloaded archive and double-click on the **setup.exe** file there:

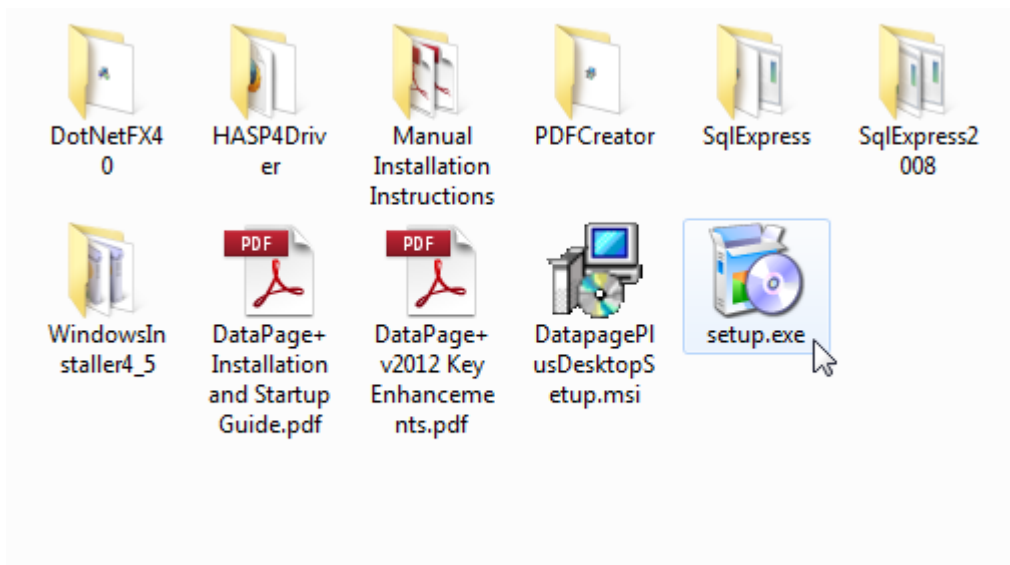


Figure 1 – The Setup.exe File

The installation wizard opens. If any of the above required components are missing, the installation package attempts to install them before installing the main DataPage+ application.

Step 2: Accept License Agreements

Accept any license agreements that appear:

- If it appears, click **Accept** for the Microsoft .NET Framework 4 component (Figure 2).
- If it appears, click **Accept** for the Microsoft SQL Server 2008 Express (Figure 3).

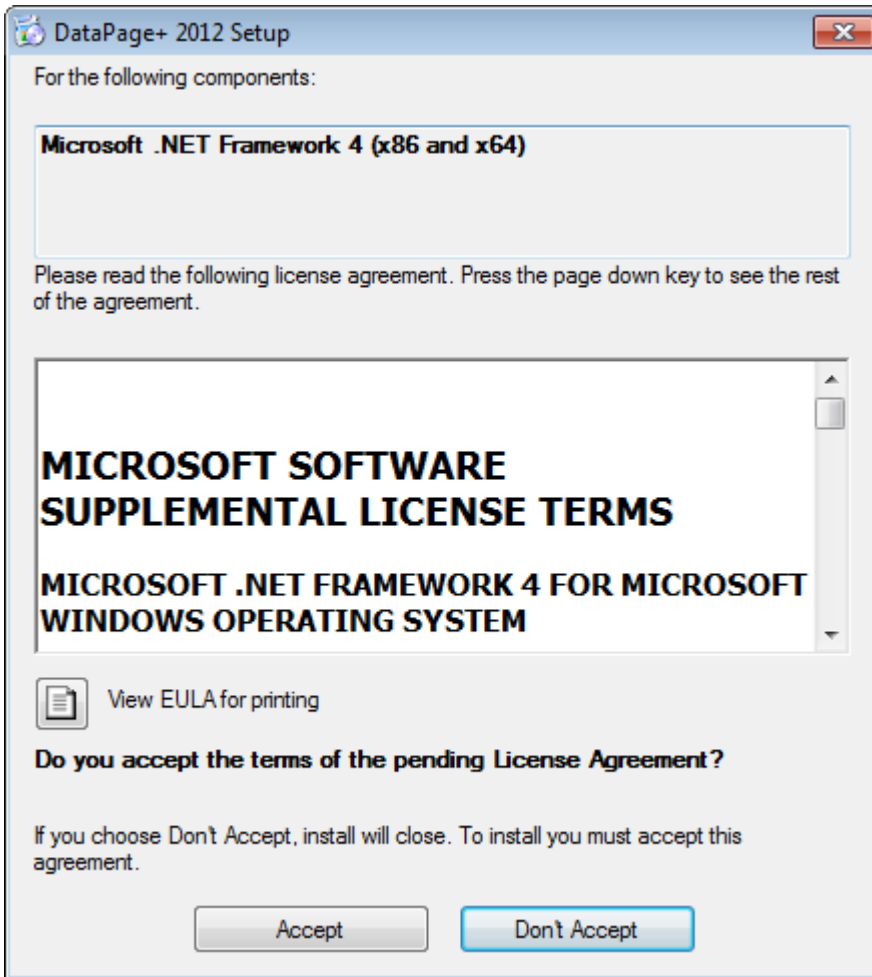
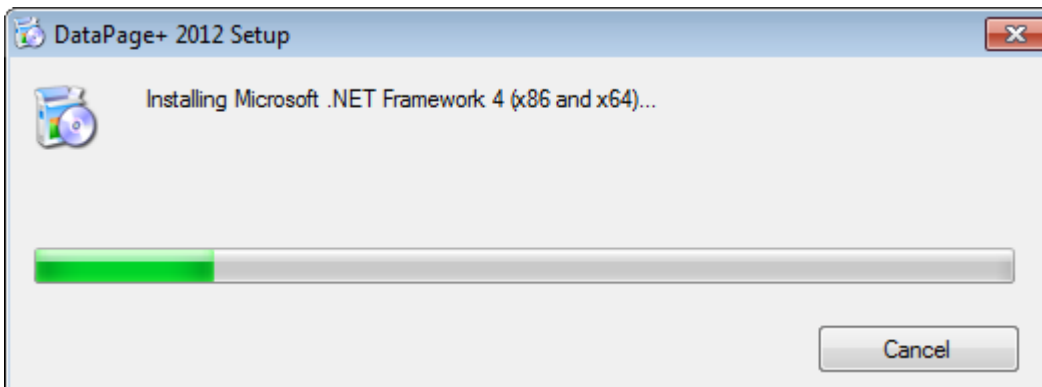


Figure 2 – The Microsoft .NET Framework 4 Pending License Agreement Acceptance

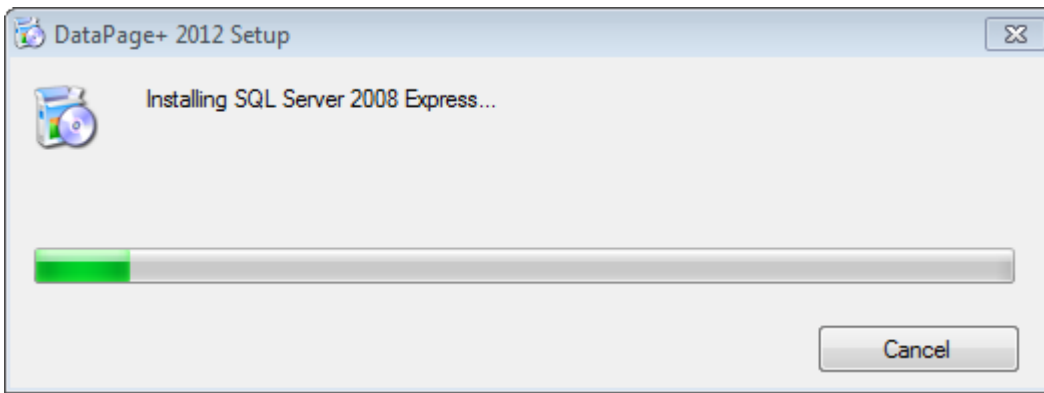


Figure 3 – The SQL Server 2008 Pending License Agreement Acceptance

A progress bar appears first for the .NET Framework 4:



Once that component has installed another progress bar appears immediately for the SQL Server 2008 Express installation:



Be patient; the installation of these required components can take several minutes.

Once the .NET Framework 4 and MS SQL Express 2008 components are installed, the installation program immediately begins the main DataPage+ installation. See "Installing the DataPage+ Software" on page 5.

Installing the DataPage+ Software

Overview

This covers installing just the DataPage+ application. The installer should have already installed the prerequisite components. See "Installing Prerequisite Components" on page 1 for more information.

Step 1: Start the Wizard

Note: If you run the setup.exe installation program and an existing version of DataPage+ already exists on your system, you will have the option of repairing or removing the existing installation.

Also, if you are running the FULL installation set, this installer will install MS .NET Framework 4 and if it is missing from the current system.

Once the .NET Framework 4 and MS SQL Express 2008 components are installed, the installation program immediately begins the main DataPage+ installation.

The **Datapage+ Setup Wizard** automatically appears to guide you through this process. Fill in any boxes and select desired options. Click **Next** at each screen.

At the initial welcome screen (Figure 4), click **Next** to start the wizard:

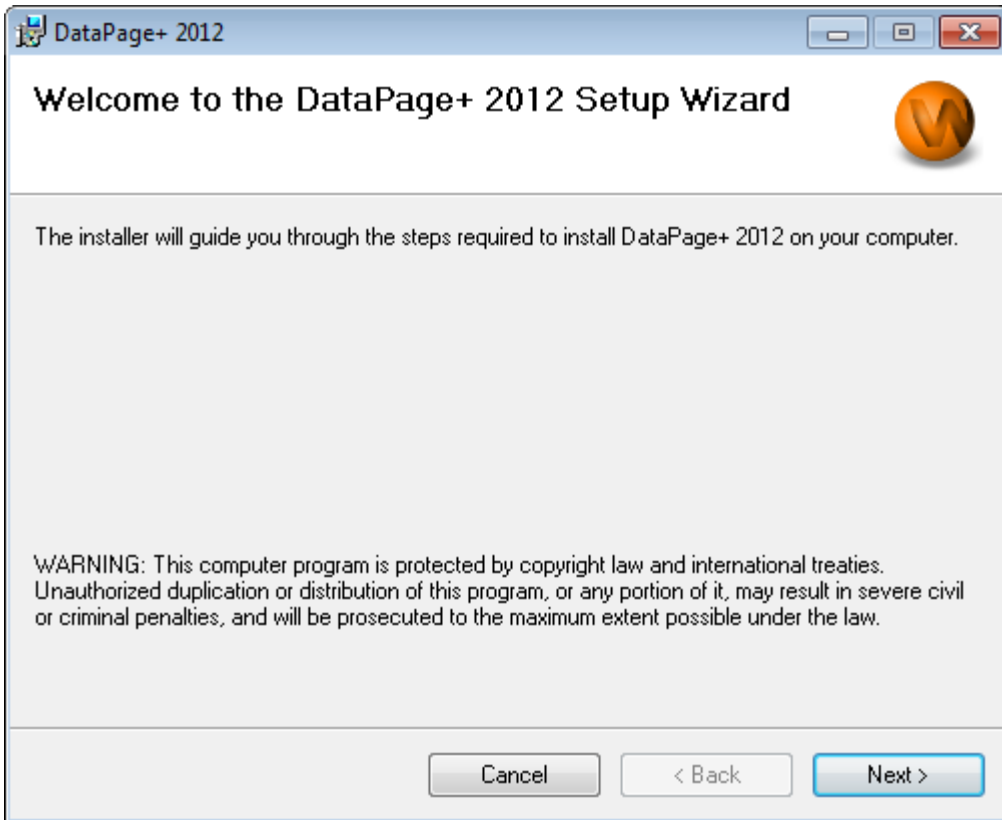
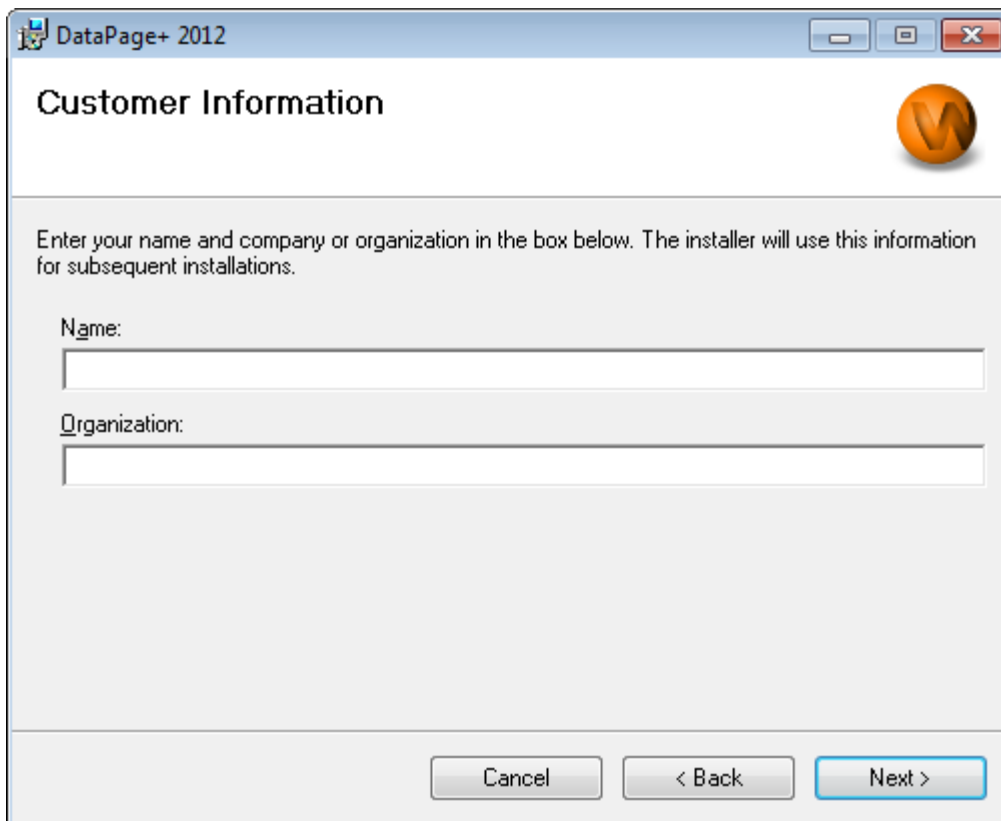


Figure 4 – Initial Welcome Screen

Step 2: Fill in Customer Information

The **Customer Information** screen appears (Figure 5).



DataPage+ 2012

Customer Information

Enter your name and company or organization in the box below. The installer will use this information for subsequent installations.

Name:

Organization:

Cancel < Back Next >

Figure 5 – Customer Information Screen

Type in your information into **Name** and **Organization**, and then click **Next**:

Step 3: Select Items to Install

Customize your installation (Figure 6) by selecting only those components you want to install from the **Customize Installation 1** screen:

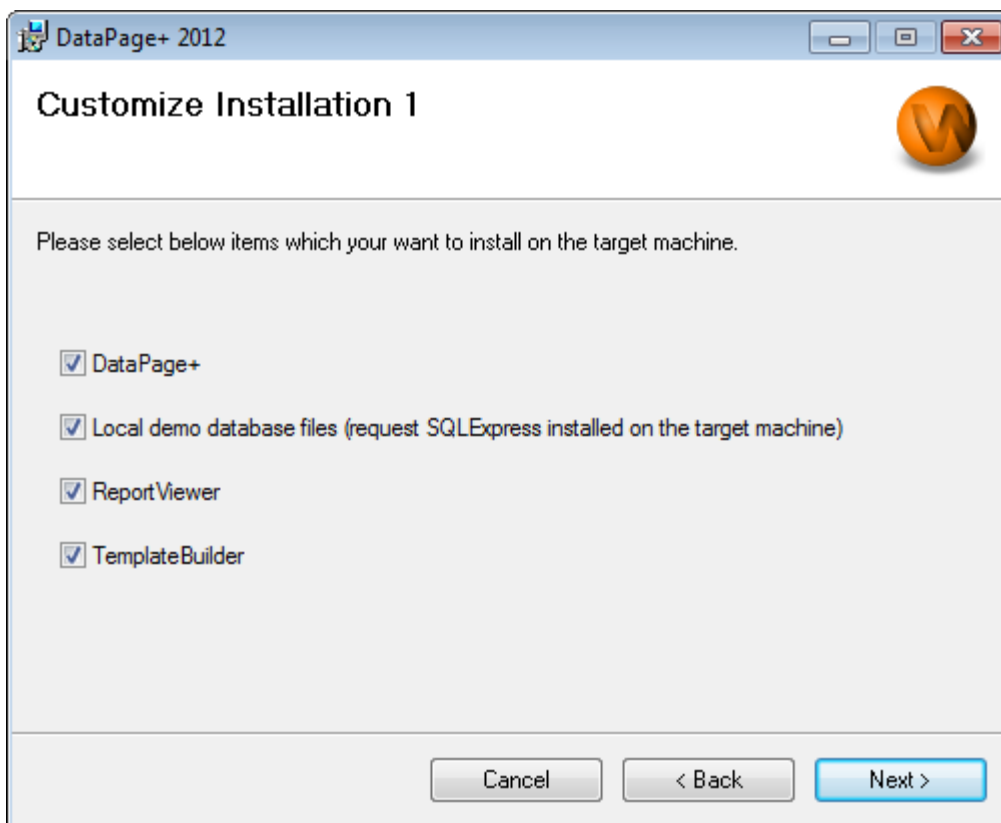


Figure 6 – Customize Installation 1 Screen

These check boxes determine the products to install:

- **Datapage+ - If marked, this installs the main Datapage+ application.**
- **Local demo database files -** If marked, this installs the Demo database used in the legacy version of DataPage/RT.
- **Report Viewer** – If marked, this installs a stand-alone report viewer, letting you view reports that were created and saved from within DataPage+.
- **Template Builder** – If marked, this installs an application that lets you modify or build your own DataPage+ report templates.
- Click **Next** to proceed. The **Customize Installation 2** screen appears (Figure 7).

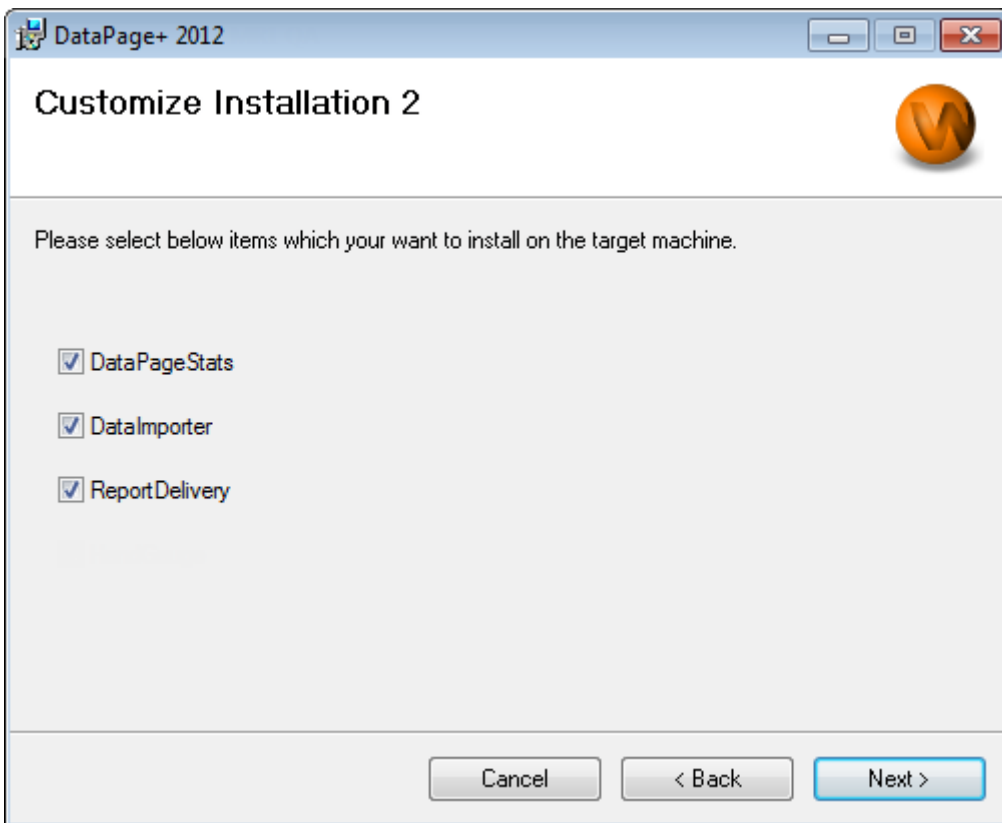


Figure 7 – Customize Installation 2 Screen

Choose additional tools to install:

- **DataPageStats** – If marked, this installs the DataPageStats.exe utility. This tool creates a new XML statistics file for Datapage+ from within a PC-DMIS part program.
- **Data Importer** – If marked, this installs the Dataimporter.exe utility. This tool monitors a specified directory on your local computer to import data of supported file types.
- **ReportDelivery** – If marked, this installs the ReportDelivery.exe utility. This tool automatically sends DataPage+ reports to a specified directory or emails them to desired recipients.

Click **Next** to proceed.

Step 4: Select the Installation Folder

The **Select Installation Folder** screen appears (Figure 8).

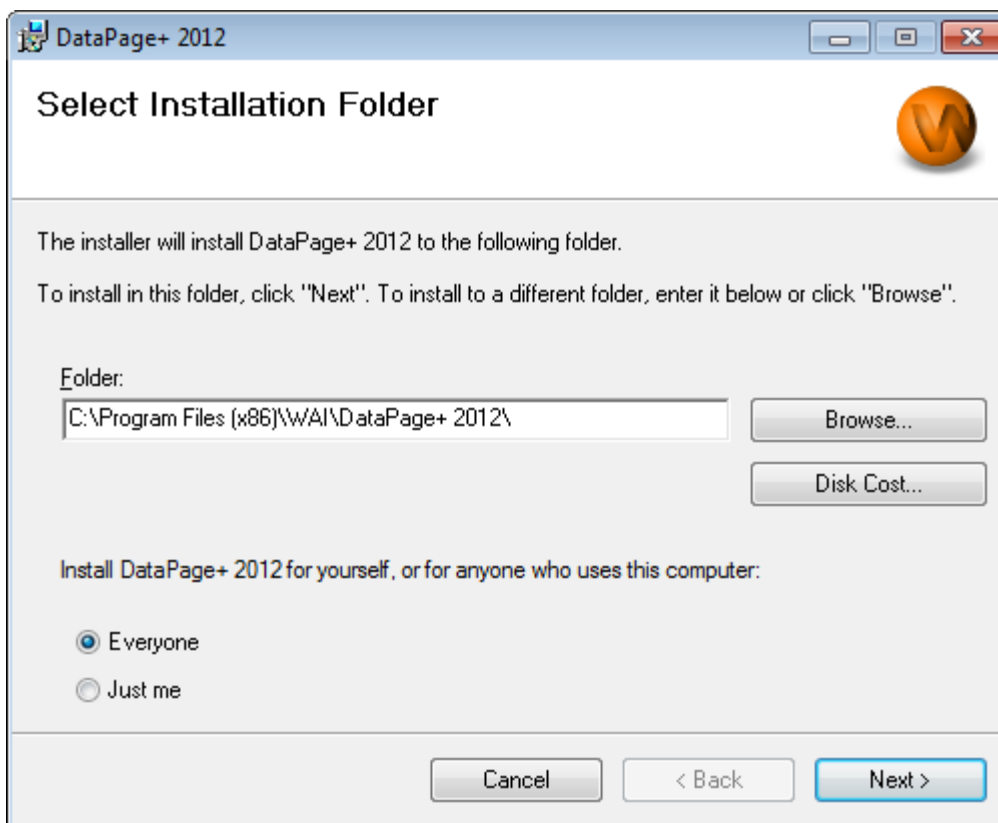


Figure 8 – Select Installation Folder Screen

In the **Folder box**, type the folder pathway you want to install to, or use the **Browse** button to navigate to the folder.

Decide whether you want to install the software for just yourself (**Just me**) or for all users of the computer (**Everyone**).

If needed, the **Disk Cost** button displays how much space you have on your currently selected disk drive and how much space it will take to install the selected components.

Step 5: Confirm and Finish the Installation

Click **Next** when you're ready to proceed. The **Confirm Installation** screen appears.

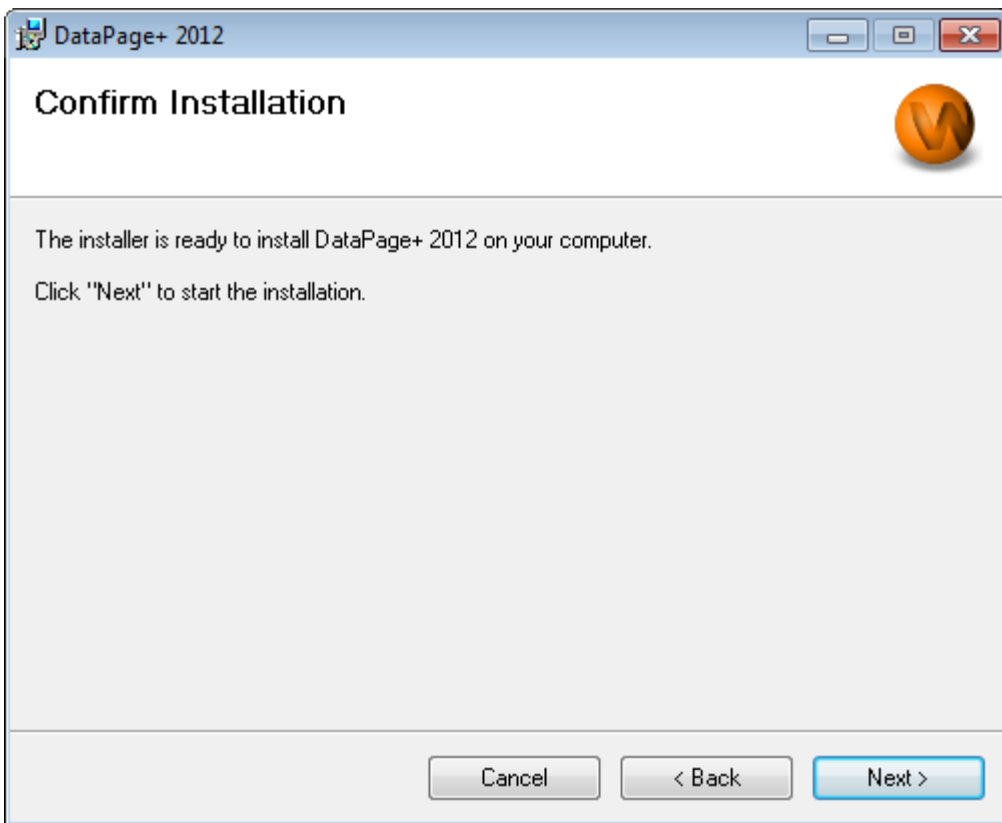


Figure 9 – Confirm Installation Screen

Confirm the installation (Figure 9), and click **Next** to start the actual installation:

A progress bar will appear showing the installation process (Figure 10):

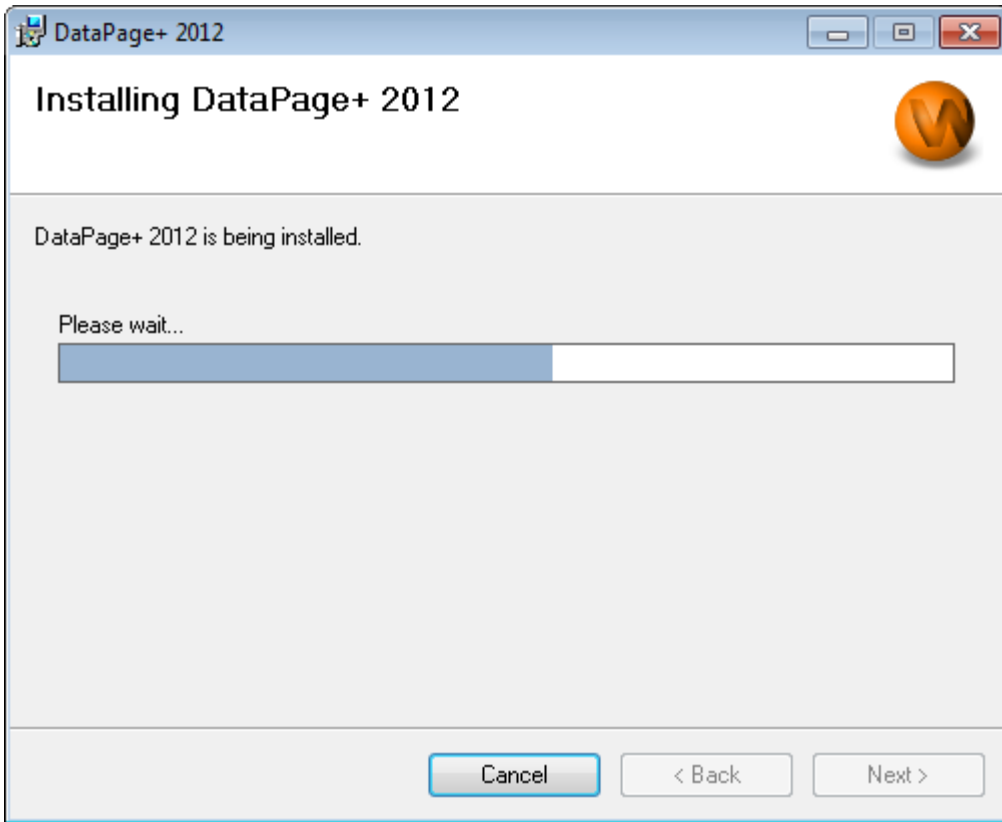


Figure 10 – Installation Progress

Once DataPage+ finishes installing the needed files and shortcuts (Figure 11), the **Close** button becomes available. Click **Close** to exit the wizard:

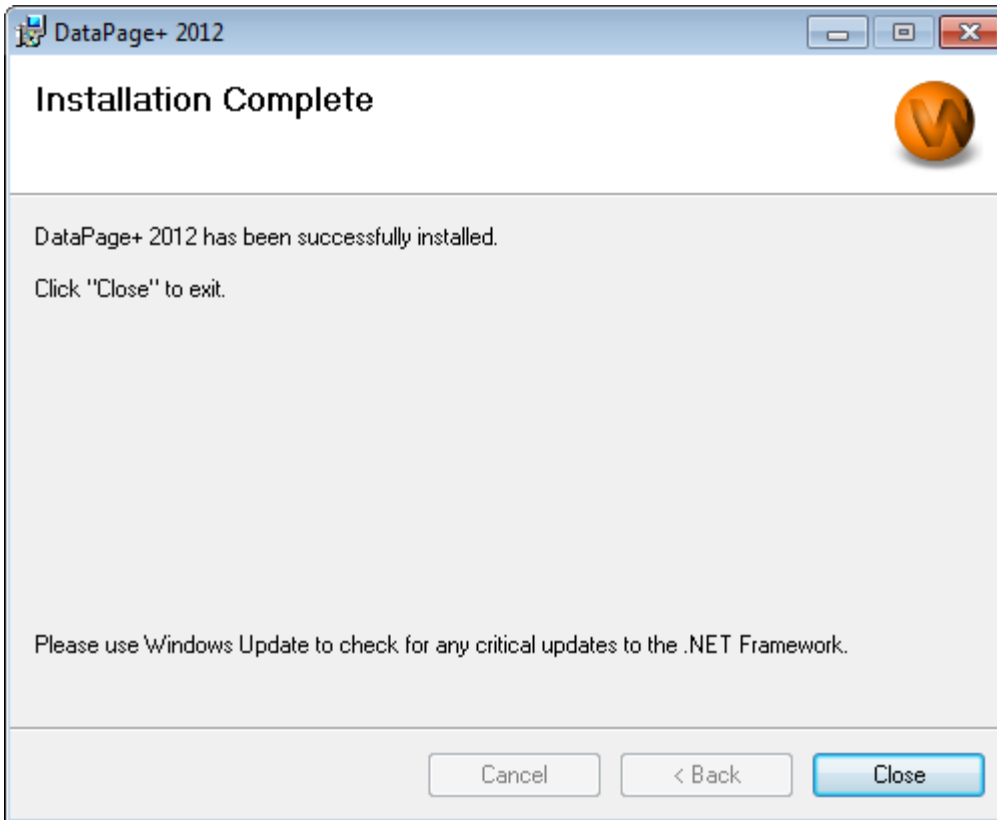


Figure 11 – Installation Complete Screen

After clicking **Close**, you can access the installed shortcut icons to launch DataPage+.

Step 6: Check the Installed Contents

After you install DataPage+, the software will install files into these default directories, depending on your Windows operating system:

Program Files

Program files are installed to your specified installation directory. These include the executables, tools, xml files, reports, help files, and additional files. The default location is listed below:

Vista/7:	C:\Program Files\Wai\Datapage+ 2012 or C:\Program Files(x86)\Wai\Datapage+ 2012
-----------------	--

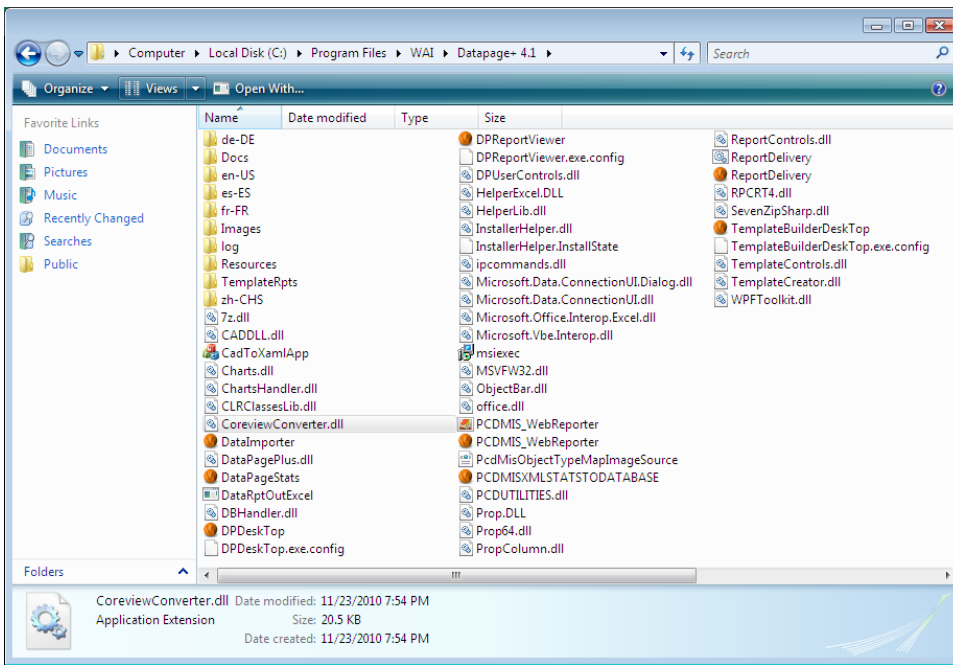


Figure 12 - Installed Program Files

Demo Database Files

If you chose to include the demo database in your install, Datapage+ installs those database files here:

Vista/7: C:\Users\<<username>\AppData\Roaming\DPPlusDatabase\
where <username> is your user name

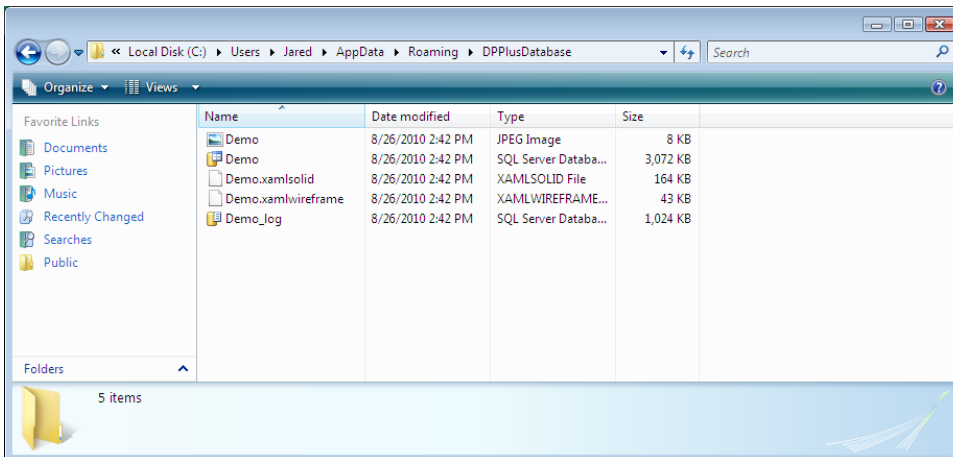


Figure 13 - Installed Demo Database

Using DataPage+ for the First Time

Overview

This helps you get started using the DataPage+ software for the first time.

Step 1: Start the Software

Once DataPage+ has been installed, launch the application by double clicking on the **DataPage+** icon where your program shortcuts are installed (Figure 14).

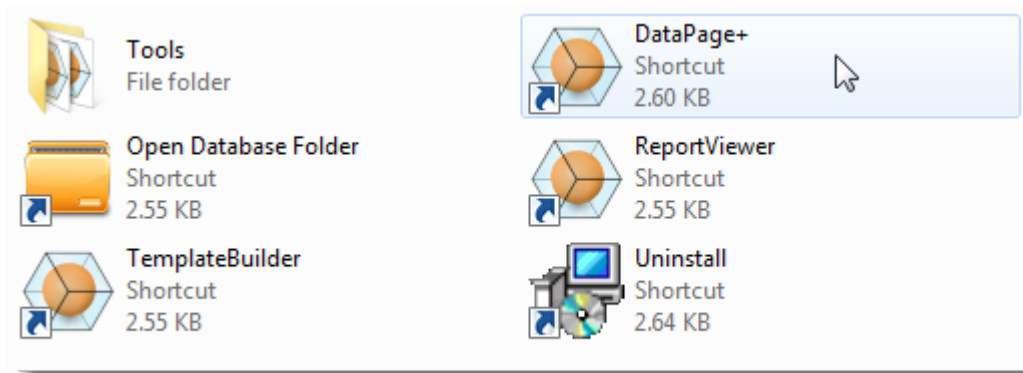


Figure 14 – Program Shortcuts

The software will attempt to connect to the Demo database. If all goes well it will present you with a login screen.

Step 2: Follow the Getting Started Guide

If you have problems connecting to the database or if you are connected to the database but simply need to register or login for the first time, access the "Getting Started Guide" inside the Datapage+ help file:

1. Click the Help button in the top-right of the application window (Figure 15).

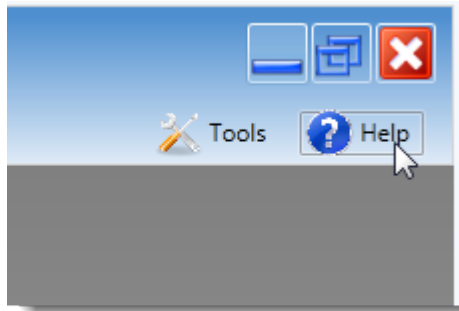


Figure 15 – Help Button

- From the initial Welcome screen on the help file, click on the "Getting Started Guide" link (Figure 16).

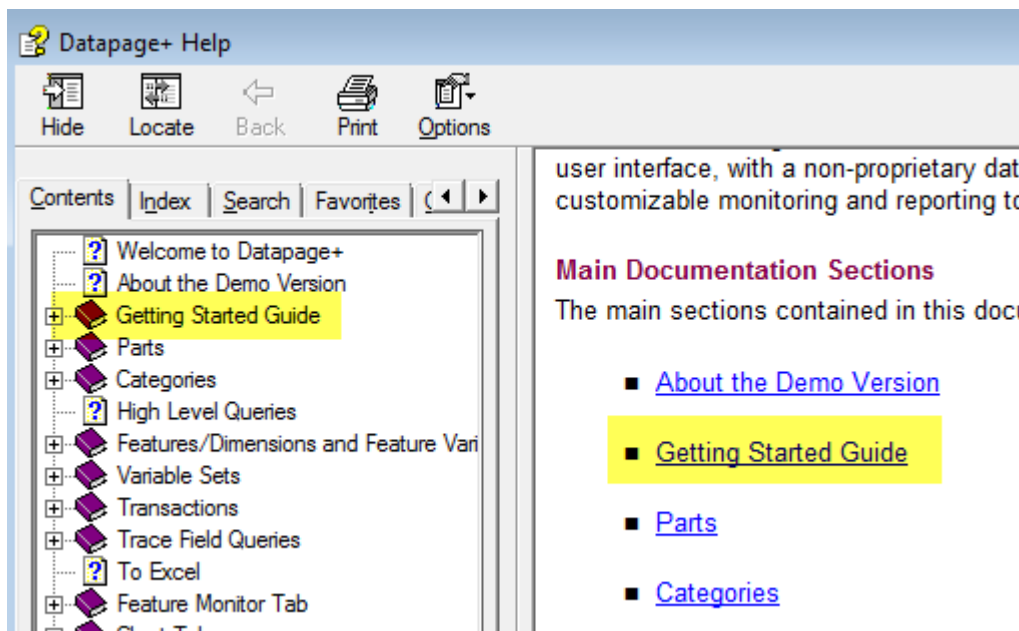


Figure 16 – Accessing the Getting Started Guide

The help file will open the Getting Started Guide. It contains information on the following useful topics for new users:

- Connecting to a Database
- Registering and Logging in
- Importing Existing Statistical Data
- Sending Data from PC-DMIS to DataPage+
- User Interface Overview
- Usage Overview

Troubleshooting the Install

Overview

If you have problems getting DataPage+ or any of the required software components to install or run properly, you may have conflicts from a previous version of Microsoft SQL Server 2005 Express or some other configuration issue.

If so, you may need to perform a manual installation and configuration of the required software components. To do this, consult the PDF setup guides located in the "Manual Installation Instructions" directory of your installation files.